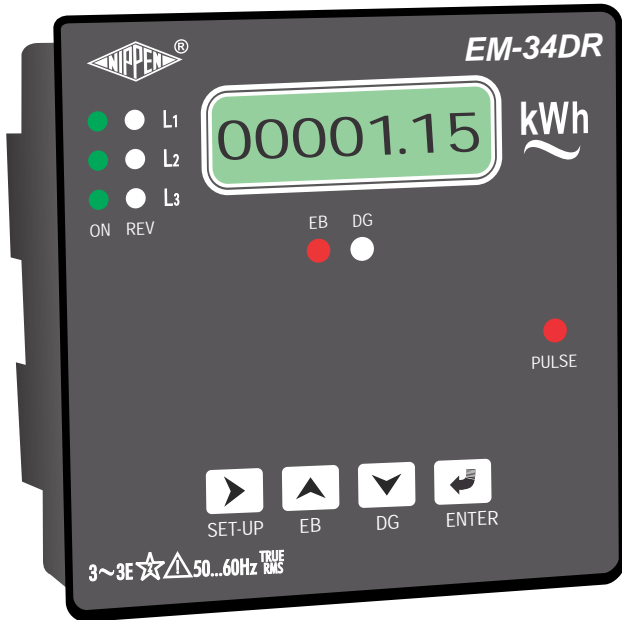


# ENERGY METER kWh



## EM-34DR

----- kWh WIZARDS

- ▶ 8 digits standard LCD display.
- ▶ Single meter records Electricity and utility.
- ▶ Individual phase and current reversal led indication.
- ▶ RS-485 port modbus communication RTU protocol.



### NIPPEN ELECTRICAL INSTRUMENTS CO

Unit 1 :12-A Joy Engg Compound,Marol Maroshi Road,Andheri (E),Mumbai - 400059,India

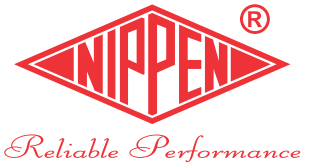
Unit 2:106,Tejpal Industries Premises,Andheri Kurla Road,Sakinaka,Mumbai - 400072,India

Tel : 022-29201581/29253164/29201806

Email : sales@nippenco.com

[www.nippenco.com](http://www.nippenco.com)

# ENERGY METER kWh EM-34DR



The product has a 8 digit LCD display with backlit. It continuously displays kWh parameter. The kWh display is resettable using in front key function. It has rich high frequency led pulse output in front facia.

## Features

- True Rms measurement.
- Accuracy class 1s.
- Accurate reading for balanced as well as unbalanced loads.
- Accurate reading even under rapid fluctuation.
- LCD display with yellow green backlit.
- Phase available indication provided.
- Phase reverse indication provided.
- 8 digits for direct kWh reading.
- On site programmable CT ratio and PT ratio, Meter Id.
- Reliable performance at Low Current(>5% of load).
- Potential free pulse output for energy.
- Flush mounting compact design.
- Four switch for programming functions on front side.
- Energy reset and password protection.
- Old register to store the previously cleared energy value.
- Once CTR, PTR programmed,the meter displays direct reading of kWh.

## Applications

- Commercial and Industrial Sub Metering.
- Special oem application.
- Control and relay panels.
- Genset, Solar applications, Ups.
- Switch gear panels.
- Scada, BMS(Building management systems).

## Electrical Specification

- System : 3phase 4wire / 3phase 3wire / 1phase 2 wire.
- Operating Voltage: 80 - 500 V AC Line to Line at 45.....65 Hz.
- PT ratio : 110v to 500kv / 110v.
- DG sensing voltage : 230V Ac.
- Current: 50mA-6A AC.
- CT Primary Ratio: 5-9999AAC (only primary to be set).
- Power Consumption:<0.4VA in Current Circuit,< 0.4VA in Voltage.
- Auxiliary supply: 230V AC / 110V AC (±20%) 50Hz.
- Burden : 0.2VA per phase & < 3VA max on Auxiliary supply.
- Power factor : 0.8lead, Unity, 0.5lag.
- Dielectric strength : 2 kv for 1min..

## Environment

- Ambient: -10° C to 55° C.
- Storage: -20° C to 70° C.
- Humidity: <95% RH ..... Non condensing.

## Mechanical Dimensions

- Front : 96mm x 96mm / Depth 54mm
- Panel Cut Out : 91mm x 91mm ± 0.1mm
- Casing : Flame retardant ABS.
- Connector : ABS & Pcb terminal block.
- Weight 450gm approximately.

## Relevant Standard

- EMC: IEC 61326 / Immunity: IEC 61000-4-3 / Safety: IEC 61010-1-2001
- Protection : Ip52 Front / Ip20 Terminal block.

## Display Refer

- 5A -50A 00000.00 kWh
- 51A-500A 000000.0 kWh
- 501A-5000A 00000000 kWh
- Above 5000A 00000000 kWh

## Typical Diagram

