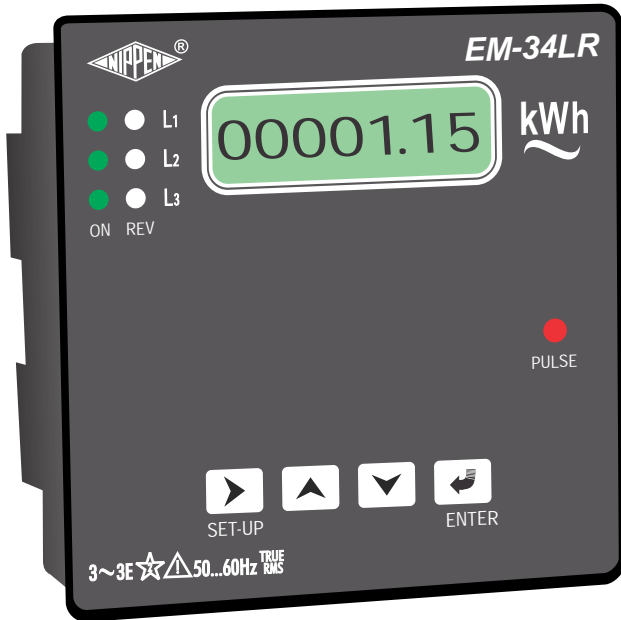
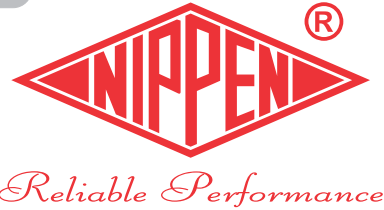


ENERGY METER kWh



EM-34LR

----- kWh WIZARDS

- ▶ Single meter records Electricity and utility.
- ▶ Individual phase and current reversal led indication.
- ▶ Optically isolated open collector pulse output.
- ▶ RS-485 port modbus communication RTU protocol.



NIPPEN ELECTRICAL INSTRUMENTS CO

Unit 1 :12-A Joy Engg Compound,Marol Maroshi Road,Andheri (E),Mumbai - 400059,India

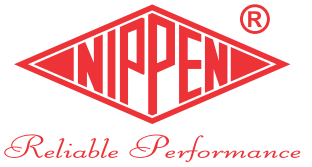
Unit 2:106,Tejpal Industries Premises,Andheri Kurla Road,Sakinaka,Mumbai - 400072,India

Tel : 022-29201581/29253164/29201806

Email : sales@nippenco.com

www.nippenco.com

ENERGY METER kWh EM-34LR



The product has a 8 digit LCD display with backlit. It continuously displays kWh parameter. The kWh display is resettable using key function. It has rich high frequency led pulse output in front facia.

Features

- True Rms measurement.
- Accuracy class 1s.
- Accurate reading for balanced as well as unbalanced loads.
- Optically isolated open collector pulse output.
- LCD display with yellow green backlit.
- Phase available indication provided.
- Phase reverse indication provided.
- 8 digits for direct kWh reading.
- On site programmable CT ratio and PT ratio, Meter Id.
- Reliable performance at Low Current(>5% of load).
- Potential free pulse output for energy.
- Flush mounting compact design.
- Four switch for programming functions on front side.
- Energy reset and password protection.
- Old register to store the previously cleared energy value.
- Once CTR, PTR programmed, the meter displays direct reading of kWh.
- Rs-485 modbus communication RTU protocol.

Applications

- Commercial and Industrial Sub Metering.
- Special oem application.
- Control and relay panels.
- Genset, Solar applications, Ups.
- Switch gear panels.
- Scada, BMS(Building management systems).

Electrical Specification

- System : 3phase 4wire / 3phase 3wire / 1phase 2 wire.
- Operating Voltage: 80 - 500 V AC Line to Line at 45.....65 Hz.
- PT ratio : 100v to 500kv / 110v.
- Current: 50mA-6AAC.
- CT Primary Ratio: 5-9999AAC (only primary to be set).
- Power Consumption:<0.4VA in Current Circuit,< 0.4VA in Voltage.
- Auxiliary supply: 230V AC / 110V AC (±20%) 50Hz.
- Burden : 0.2VA per phase & < 3VA max on Auxiliary supply.
- Power factor : 0.8lead, Unity, 0.5lag.
- Dielectric strength : 2 kv for 1min..

Environment

- Ambient: -10° C to 55° C.
- Storage: -20° C to 70° C.
- Humidity: <95% RH Non condensing.

Mechanical Dimensions

- Front : 96mm x 96mm / Depth 54mm
- Panel Cut Out : 91mm x 91mm ± 0.1mm
- Casing : Flame retardant ABS.
- Connector : ABS & Pcb terminal block.
- Weight 450gm approximately.

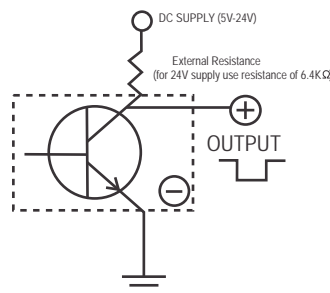
Relevant Standard

- EMC: IEC 61326 / Immunity: IEC 61000-4-3 / Safety: IEC 61010-1-2001
- Protection : Ip52 Front / Ip20 Terminal block.

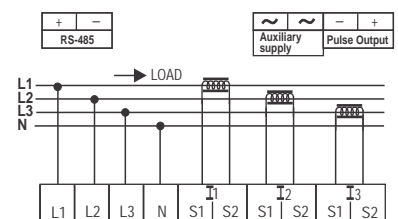
Pulse Output

- 1pulse = 10 Wh x External CT ratio x External PT ratio.
- Open collector pulse output.
- External resistance to be used Dc supply and '+' point.
- External resistance value will vary depends on external voltage of 5V to 24V, which is given by user.
- External resistance for 24 Dc is 6.4kilo ohm.

OPEN COLLECTOR PULSE OUTPUT



Typical Diagram



Display Refer

- 5A -50A 00000.00 kWh
- 51A-500A 000000.0 kWh
- 501A-5000A 00000000 kWh
- Above 5000A 00000000 kWh

